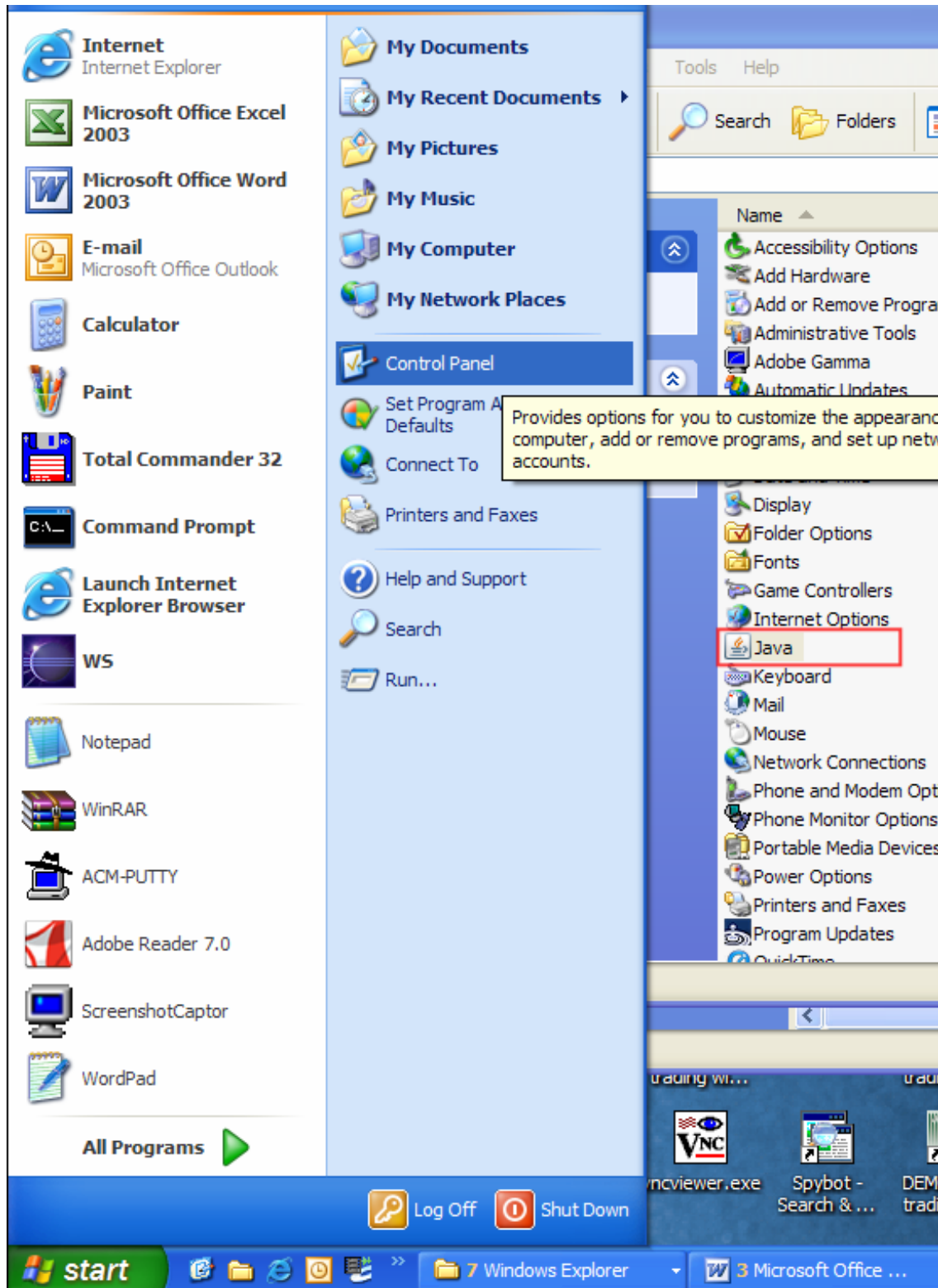


**ACM TRADING PLATFORM  
TROUBLES-SHOOTING LEVEL 3**

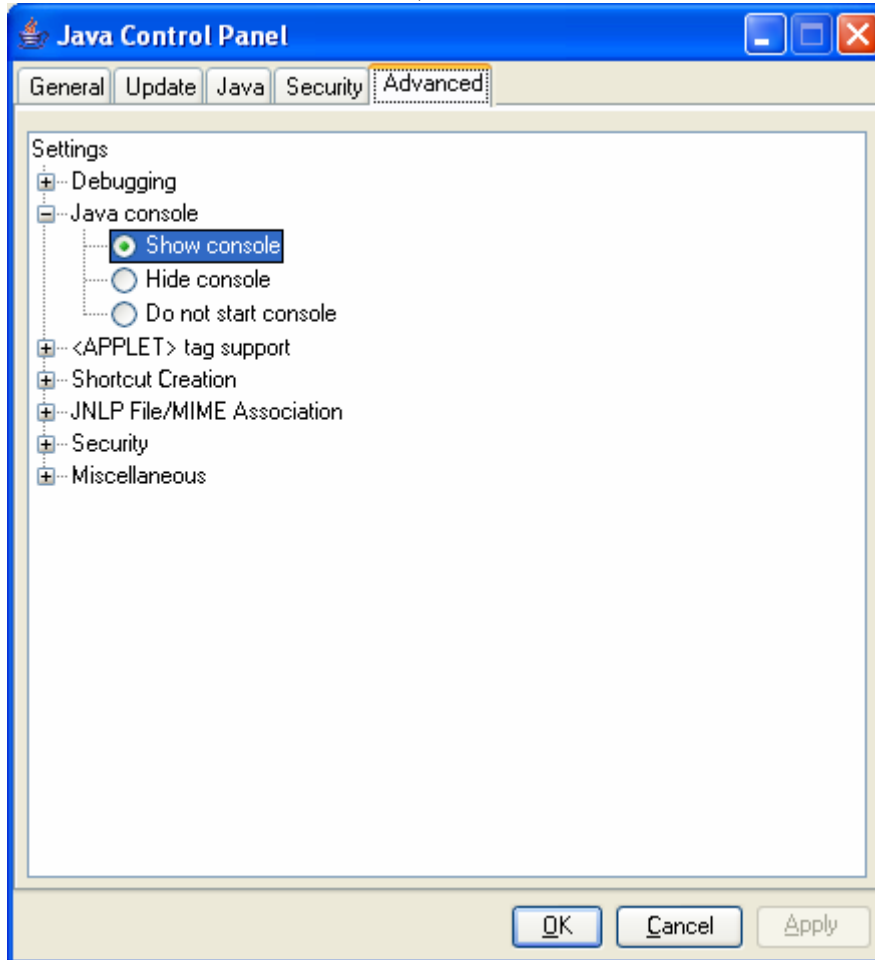
© 2005 ACM All rights reserved. The content of this document is confidential and the intellectual property of ACM SA. This documentation is protected by copyright and distributed under licenses restricting its use, copying and distribution. No part of this documentation may be reproduced in any form by any means without prior written authorization of ACM SA.

## Logging technical messages with Java Web Start 1.6

Launch the Java Control Panel from the Windows Control Panel:

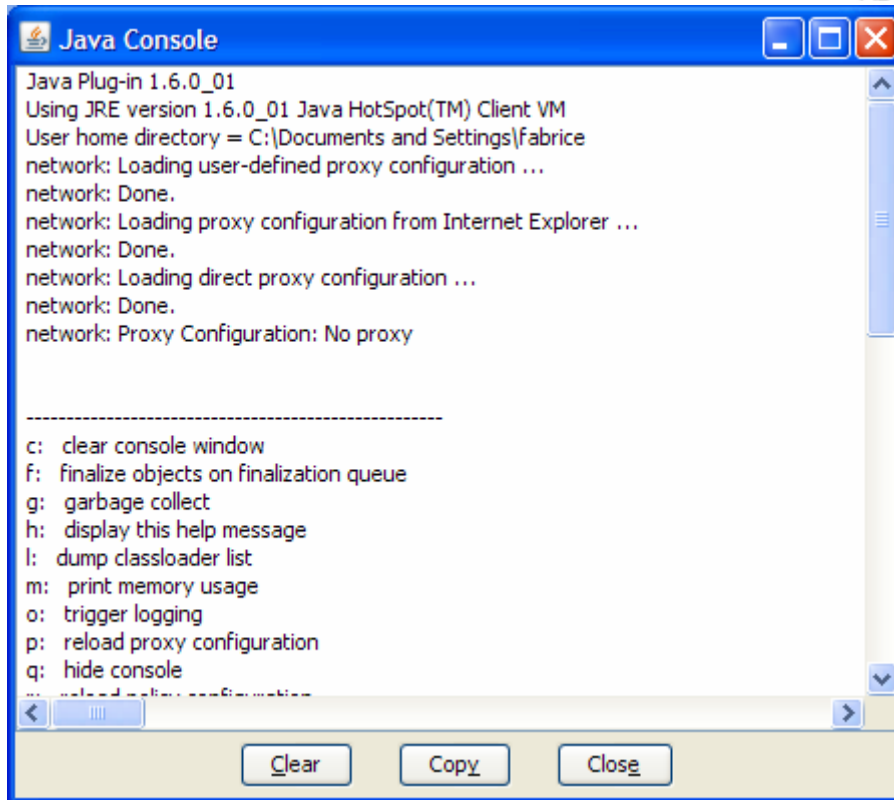


From the Java Control Panel, select the **Advanced** Tab.



Check the **“Show Java Console”** option

Activating this option enable to see the JVM output messages if the problem persists.

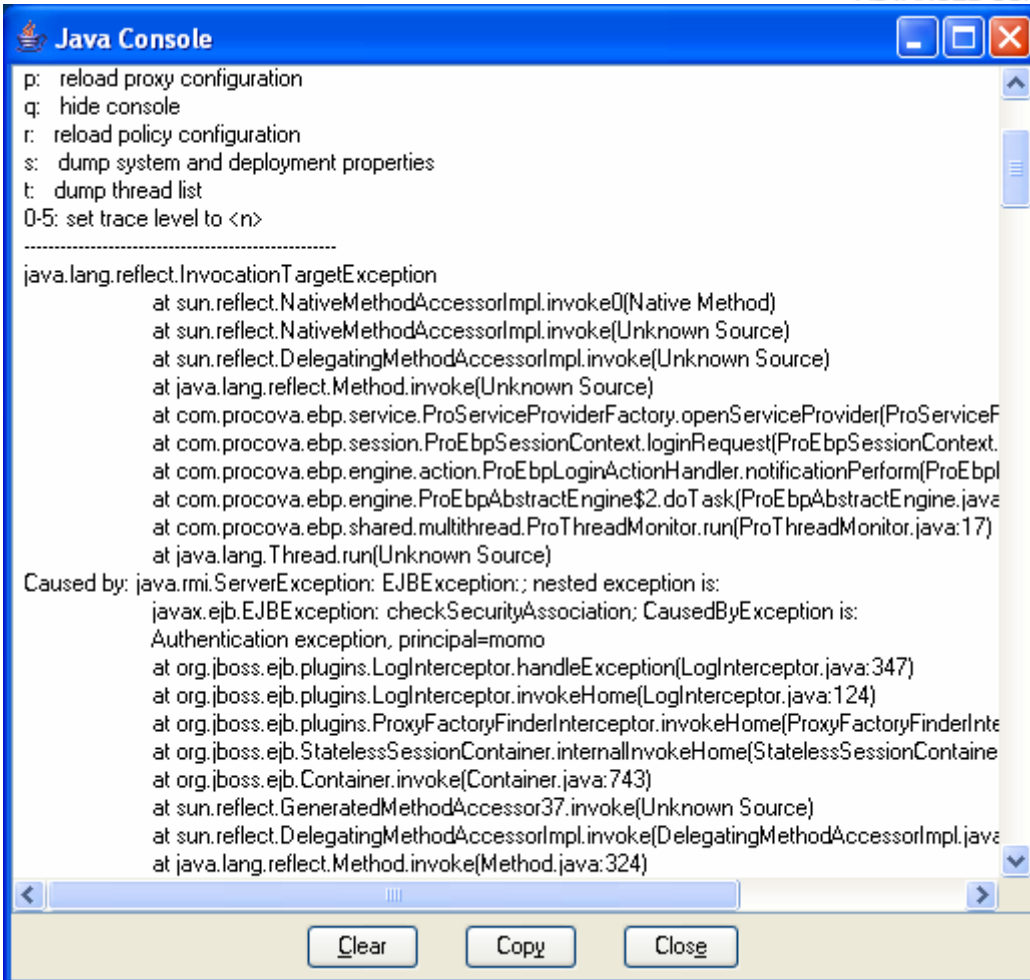


Click OK to close the **Preferences** dialog.  
Close the **Java Web Start Utility** dialog.

Try to re-launch the ACM Trading Console.

When the Trading Console start, then the java console appear.

Use the Trading console until you get trouble shoot.



```
p: reload proxy configuration
q: hide console
r: reload policy configuration
s: dump system and deployment properties
t: dump thread list
0-5: set trace level to <n>
-----
java.lang.reflect.InvocationTargetException
    at sun.reflect.NativeMethodAccessorImpl.invoke0(Native Method)
    at sun.reflect.NativeMethodAccessorImpl.invoke(Unknown Source)
    at sun.reflect.DelegatingMethodAccessorImpl.invoke(Unknown Source)
    at java.lang.reflect.Method.invoke(Unknown Source)
    at com.procova.ebp.service.ProServiceProviderFactory.openServiceProvider(ProServiceF
    at com.procova.ebp.session.ProEbpSessionContext.loginRequest(ProEbpSessionContext.
    at com.procova.ebp.engine.action.ProEbpLoginActionHandler.notificationPerform(ProEbpI
    at com.procova.ebp.engine.ProEbpAbstractEngine$2.doTask(ProEbpAbstractEngine.java
    at com.procova.ebp.shared.multithread.ProThreadMonitor.run(ProThreadMonitor.java:17)
    at java.lang.Thread.run(Unknown Source)
Caused by: java.rmi.ServerException: EJBException: ; nested exception is:
    javax.ejb.EJBException: checkSecurityAssociation; CausedByException is:
    Authentication exception, principal=momo
    at org.jboss.ejb.plugins.LogInterceptor.handleException(LogInterceptor.java:347)
    at org.jboss.ejb.plugins.LogInterceptor.invokeHome(LogInterceptor.java:124)
    at org.jboss.ejb.plugins.ProxyFactoryFinderInterceptor.invokeHome(ProxyFactoryFinderInte
    at org.jboss.ejb.StatelessSessionContainer.internalInvokeHome(StatelessSessionContaine
    at org.jboss.ejb.Container.invoke(Container.java:743)
    at sun.reflect.GeneratedMethodAccessor37.invoke(Unknown Source)
    at sun.reflect.DelegatingMethodAccessorImpl.invoke(DelegatingMethodAccessorImpl.java
    at java.lang.reflect.Method.invoke(Method.java:324)
```

IF you see error messages in the Java console, then would you please Copy the content of the java console and send it to ACM Technical staff at the address: [support@ac-markets.com](mailto:support@ac-markets.com)

Tel number: +41 (22) 319 22 03