

**ACM TRADING PLATFORM
TROUBLESHOOTING LEVEL 1**

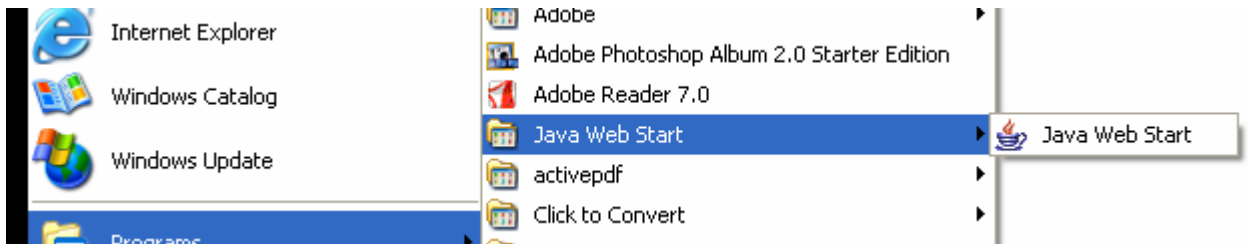


© 2005 ACM All rights reserved. The content of this document is confidential and the intellectual property of ACM SA. This documentation is protected by copyright and distributed under licenses restricting its use, copying and distribution. No part of this documentation may be reproduced in any form by any means without prior written authorization of ACM SA.

Some troubleshooting may be necessary because Java Web Start has not been configured correctly.

Procedure to check if Java Web Start 1.5 is well configured:

Launch the Java Web Start Utility by using your general menu like this.

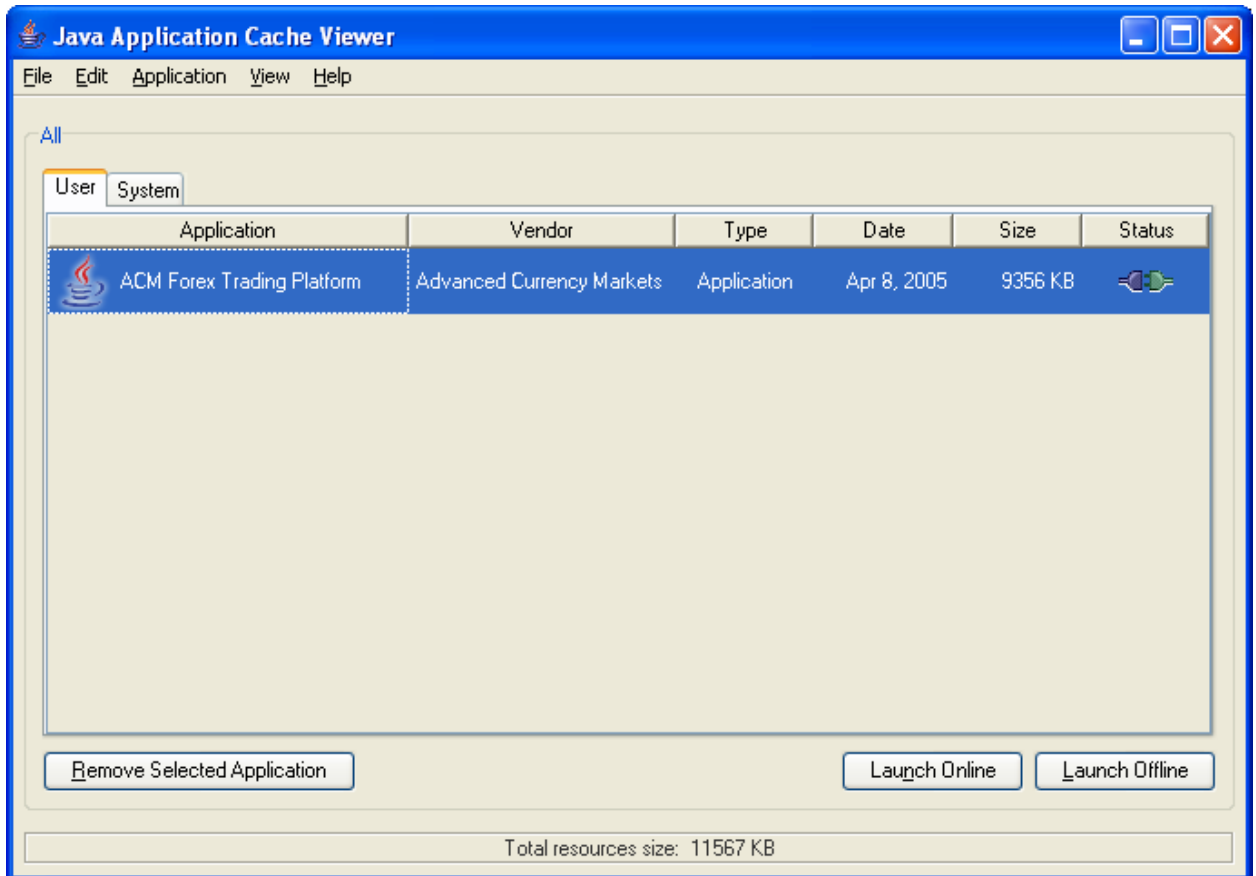


If you don't see the Java Web Start Shortcut then it should be located in your JRE installation directory.

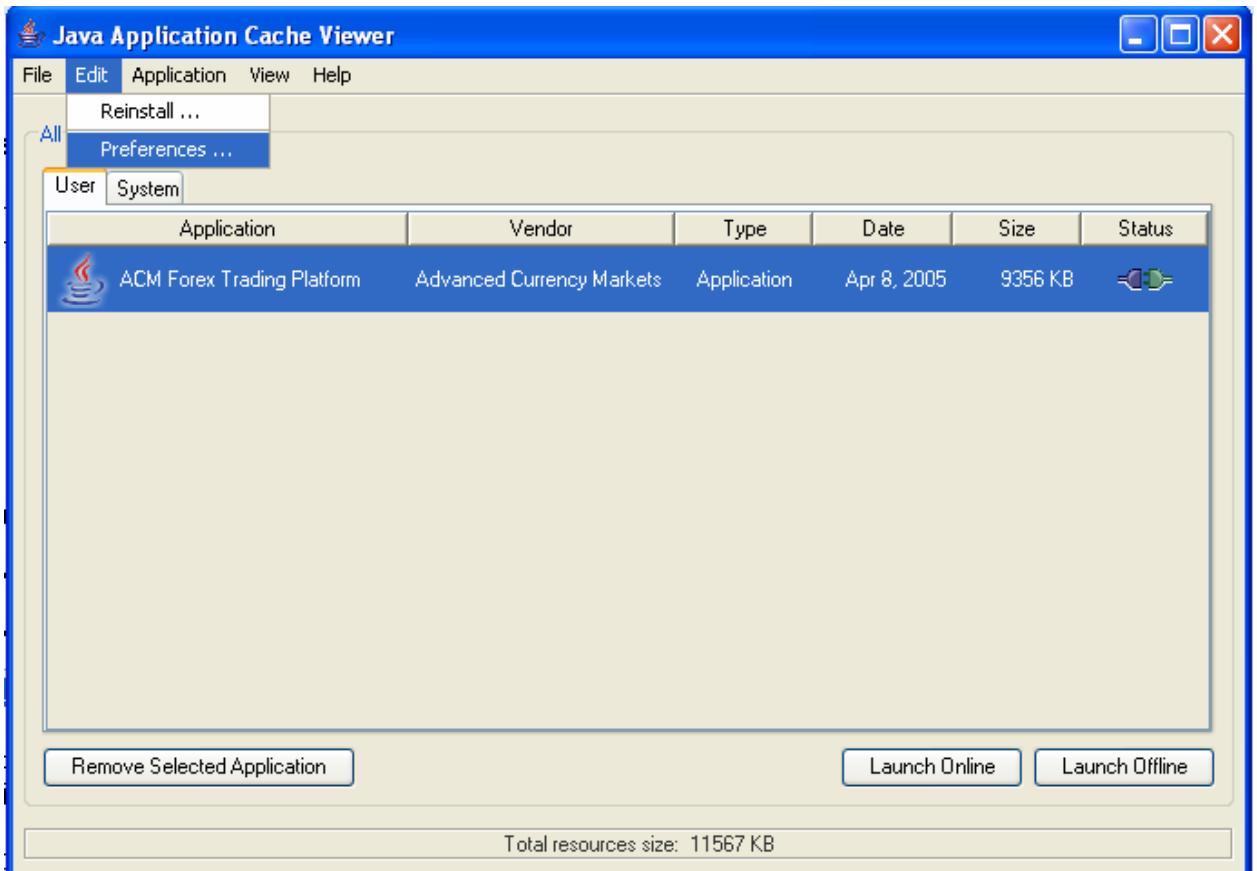
As an example: C:\Program Files\Java\jre1.5.0\bin\javaws.exe"



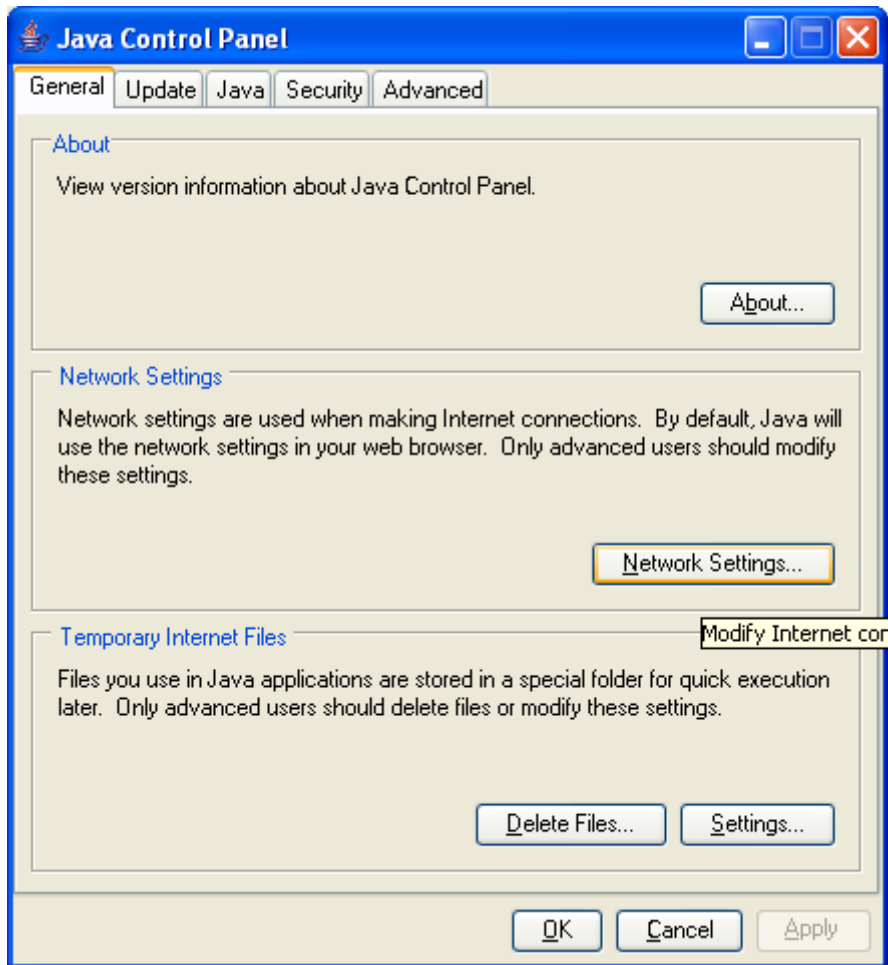
When launching the javaws.exe you see the Java Web Start Application manager



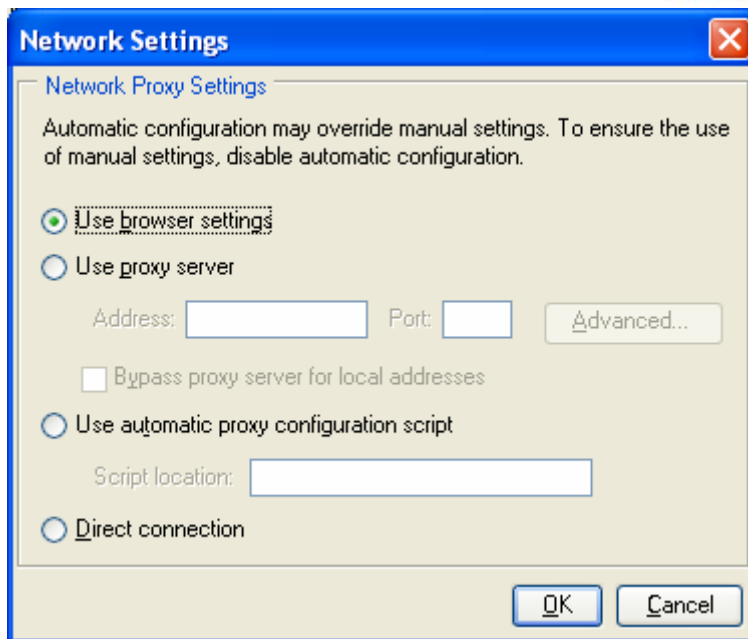
Click on **Edit => Preferences** Menu



In the **Preferences** dialog select the **General** Tab.



Click on the **Network settings** button and verify if the option Use Browser is selected in the Network Settings Dialog.



Click OK to close the **Network settings** dialog.
Click OK to close the **Preferences** dialog.
Close the **Java Web Start Utility** dialog.

Try to re-launch the ACM Trading Console.